

Step 5 - Adding polyline

On any phasing book, it is important to integrate, to improve reading, pedestrian paths, the direction of traffic of cars or trains. To do this, you can use the polyline.

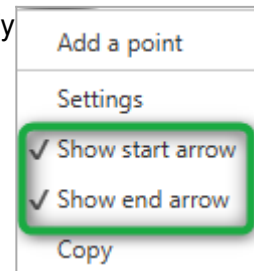
First of all, you will add the traffic lane on the south side.

In the Create phasing interface, go to the “Connected Objects” tab and click on the button .

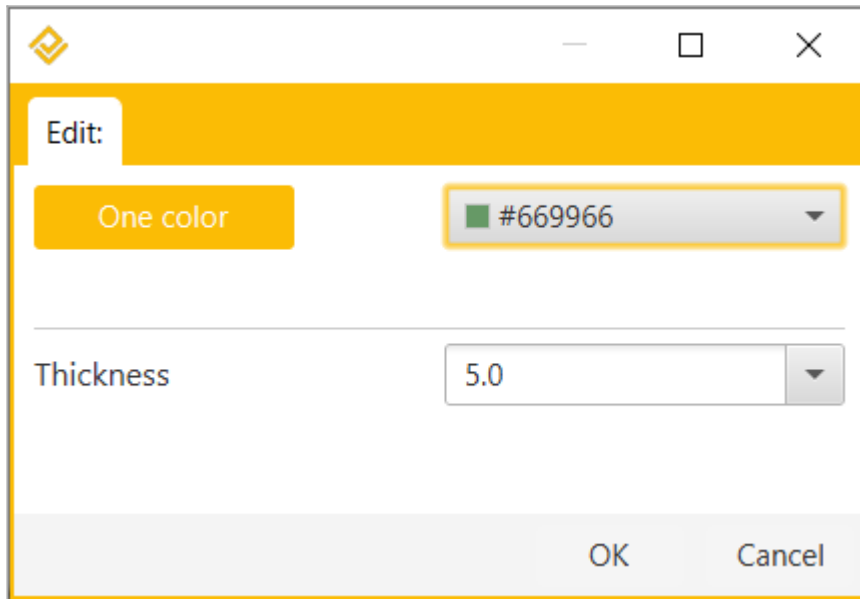
Draw your polyline (here the traffic lane in superposition of the southern roadway), point by point with the left click. Once the last point has been positioned, exit the plot mode with a right-click.



In the options that appear on the right click, you can specify which arrow to display in the case of a one-way traffic lane



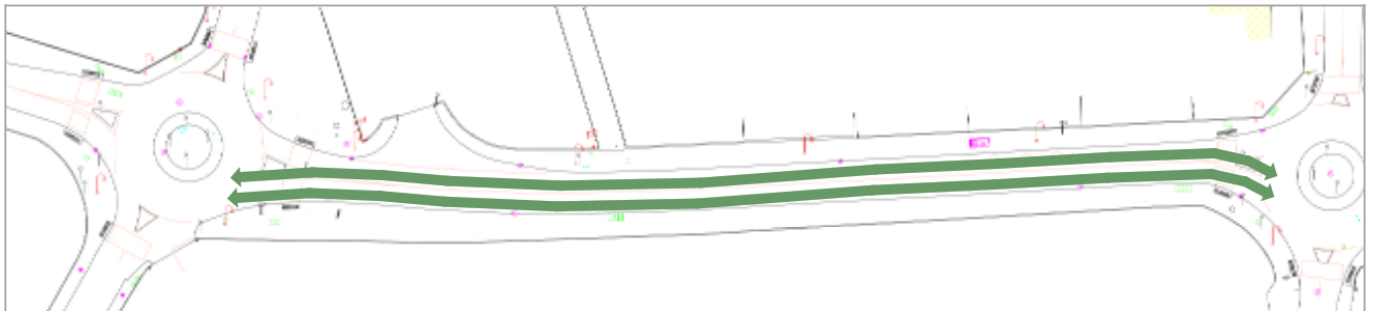
For more readability, it is possible to change the style of the polyline: just hover over it and right-click on one of its segments, then choose **Settings**. Here we will change its color:



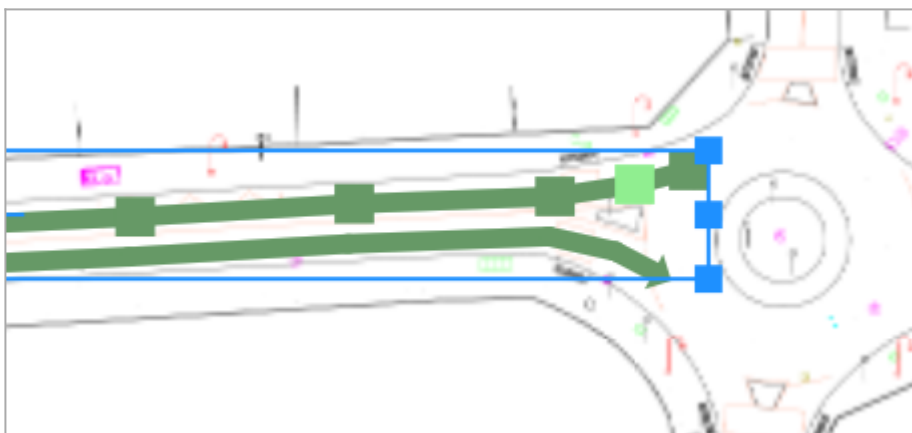
Adding a polyline

To create the North lane path, you will duplicate the polyline. Select it then do a **Ctrl-C** followed by a **Ctrl-V**.

The original polyline and its copy are superimposed. Move the new polyline to the north lane :



Click on the polyline to select it then move its control points to adjust it to the North lane:

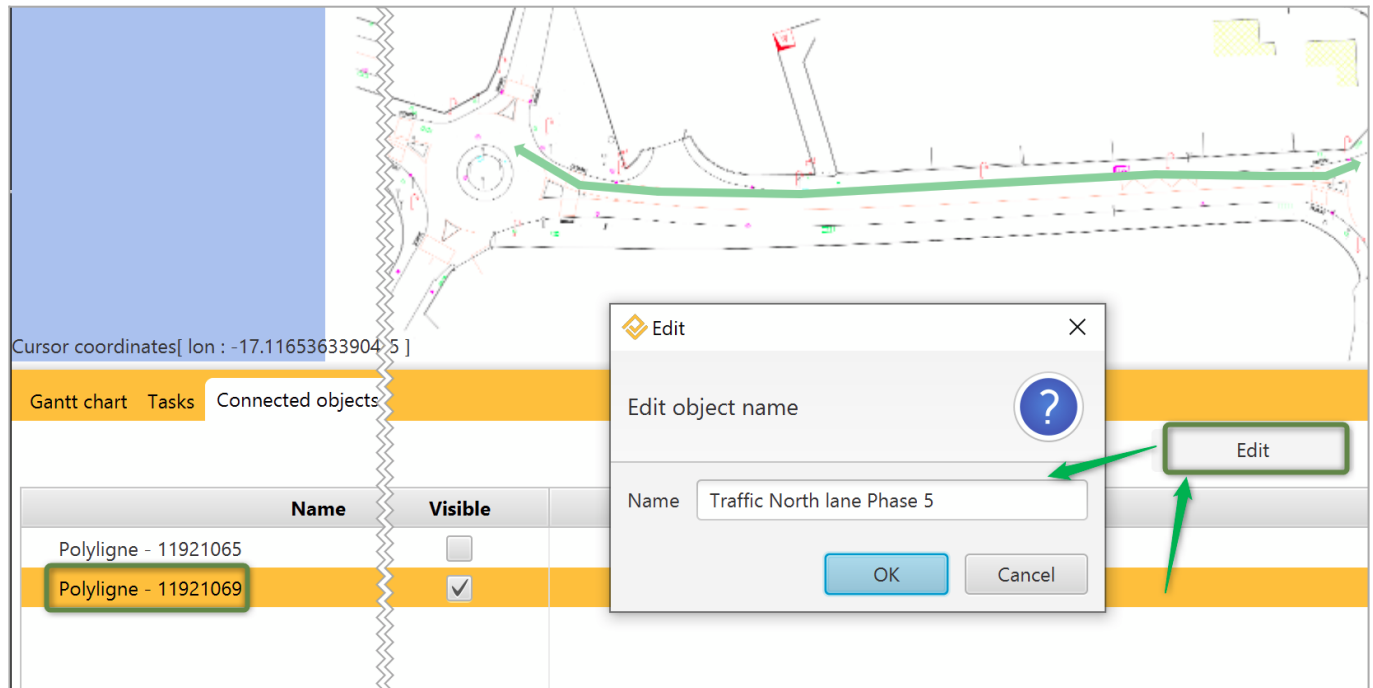


You will now rename both polylines to locate them more easily.

To rename the connected objects, they must be localized on the map.

To do this, go to the “Connected objects on selected drawing” tab, of the bottom menu of the Create phasing window, and use the visibility checkmarks to locate your connected object. Highlight the corresponding line and click on the “Edit” button.

Here we rename the polyline located at the top to “**Traffic North lane Phase 5**”:



Renaming a connected object

Click on OK, then repeat the operation with the second polyline to rename it “Traffic South lane Phase 4”.

You can now go to [step 6 of this tutorial](#) !